

Xicochi xicochi à4

Gaspar Fernández
(~1565 - 1629)

Canto

Alto

Tenor

Basso

11

22

33

Xico - chi xi-co - chi

Xico - chi xi-co - chi xi-co - chixi - co-chi, xi-co - chico - netzin -

Xico - chi xi-co - chi

Xico - chi xi-co - chi

xico - chico - netzin - tle caomiz huihui

tle co - netzin - tle caomiz huihui jo-co in an - ge - los me,

xico - chico - netzin - tle caomiz hui - hui

xico - chico - netzin - tle caomiz huihui

jo-co in an - ge los - me, caomiz huihui jo-co in an - ge - los me, in an -

caomiz huihui jo-co in an - ge - los me, in an -

jo in an - ge los - me, caomiz huihui jo-co in an - ge - los me, in an -

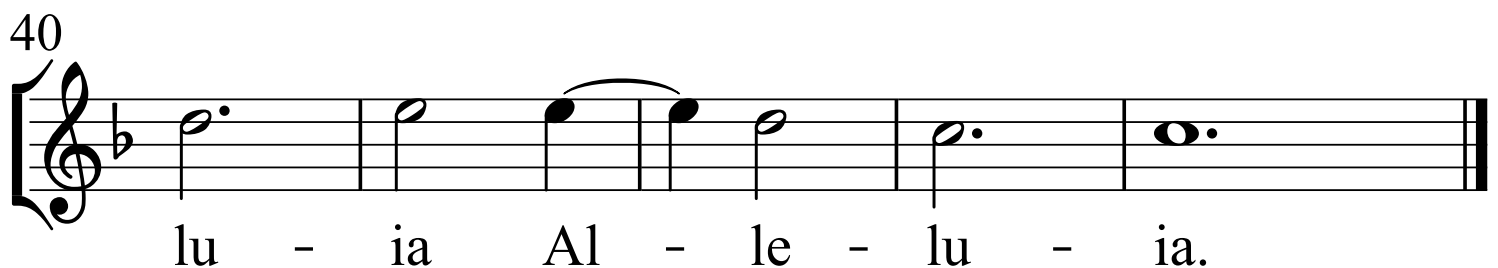
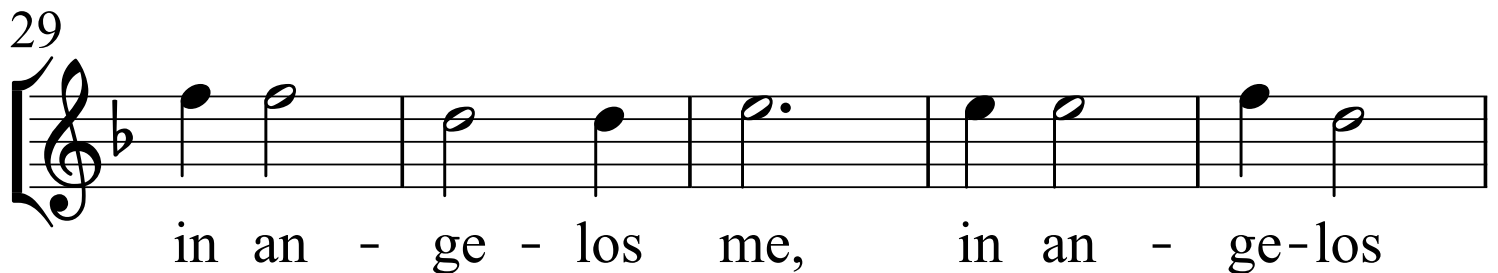
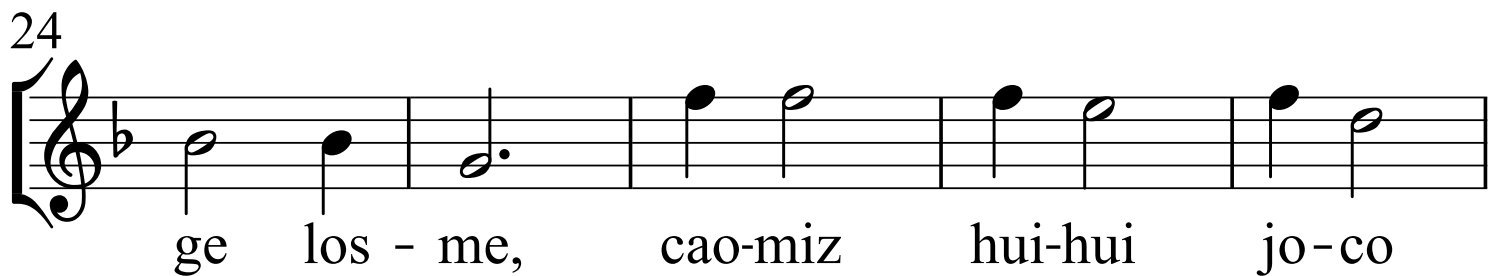
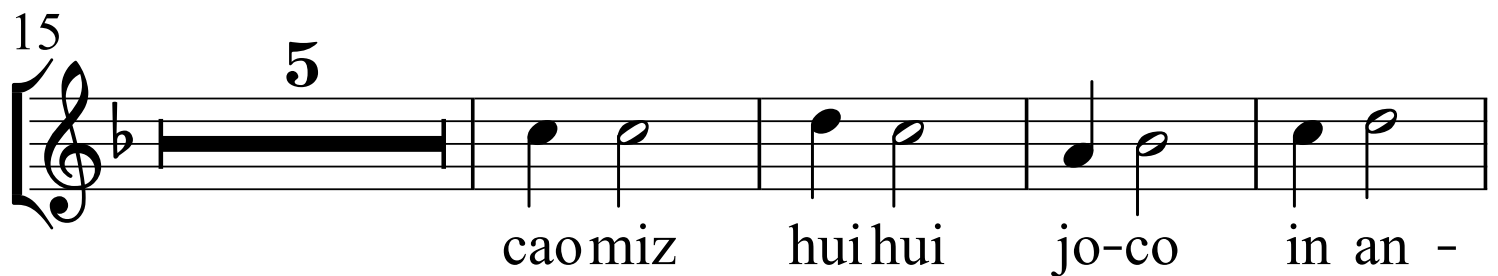
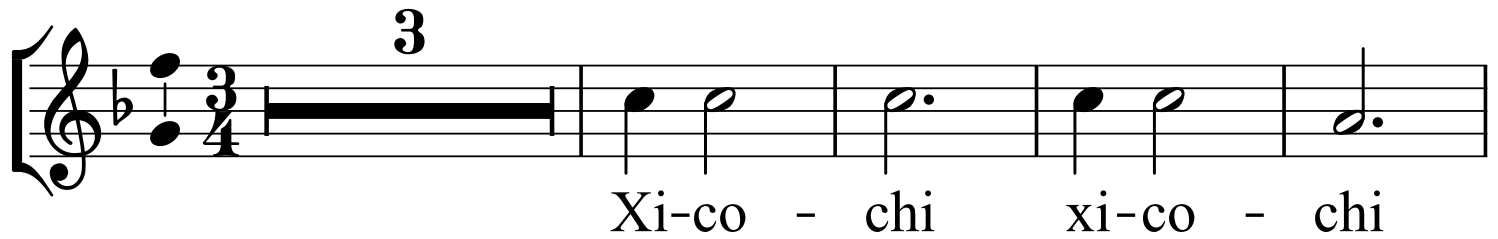
jo-co in an - ge los - me, caomiz huihui jo-co in an - ge - los me, in an -

gelos me, in an - gelos me. Al - le - lu - ia Al - le - lu - ia.

gelos me, in an - ge - los me. Al - le - lu - ia Al - le - lu - ia.

gelos me, in an - ge - los me. Al - le - lu - ia Al - le - lu - ia.

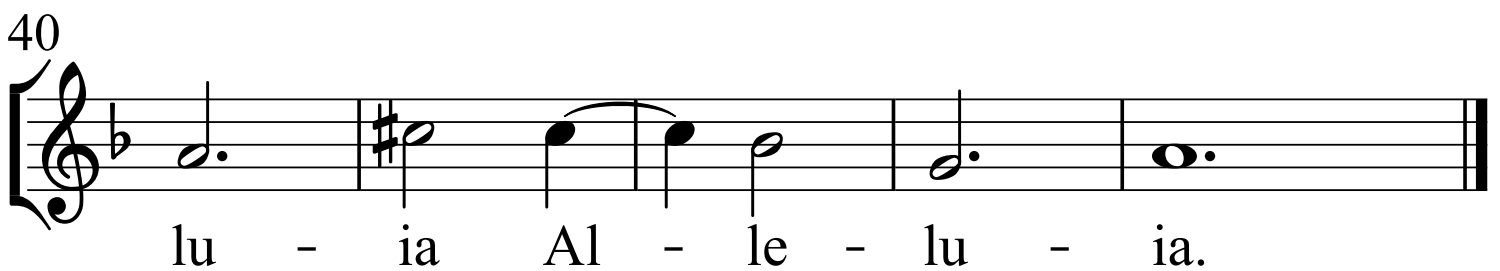
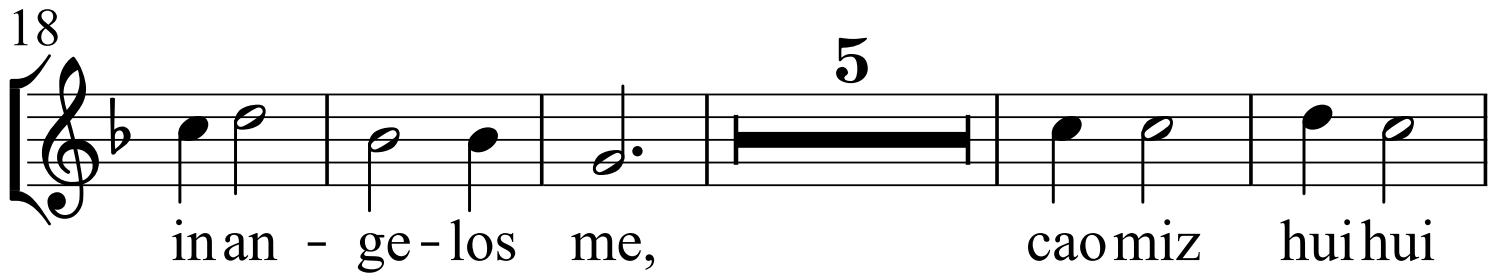
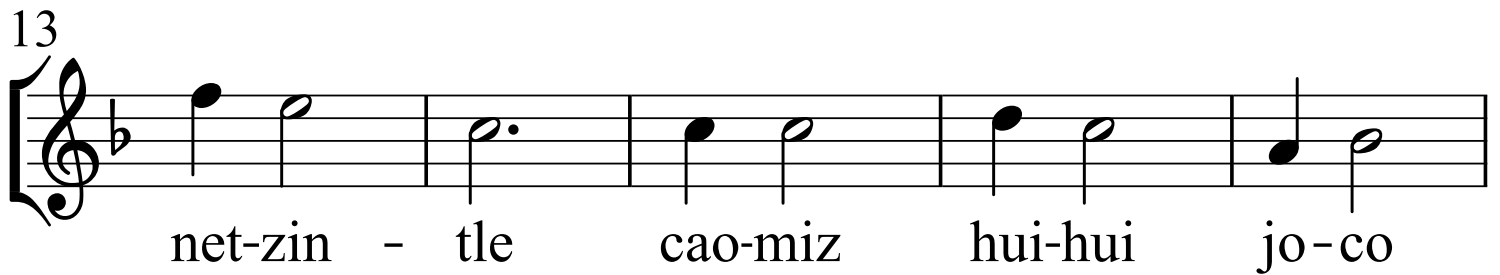
gelos me, in an - gelos me, Al - le - lu - ia Al - le - lu - ia.



Alto

Xicochi xicochi à4

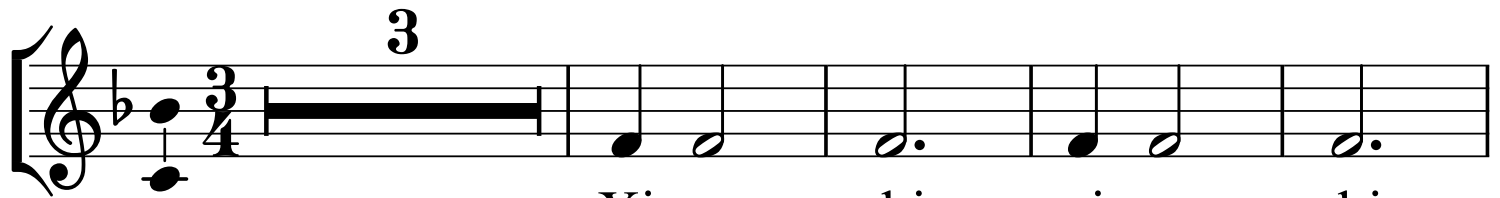
Gaspar Fernández
(~1565 - 1629)



Tenor

Xicochi xicochi à4

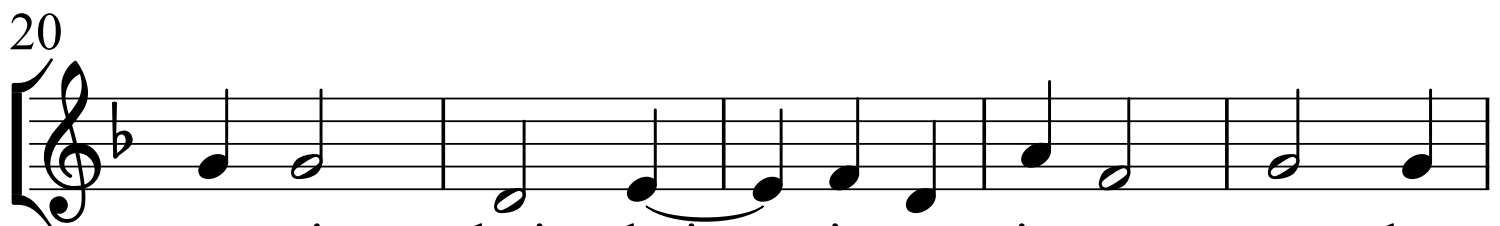
Gaspar Fernández
(~1565 - 1629)



Xi-co - chi xi-co - chi



xi-co - chico - netzin - tle



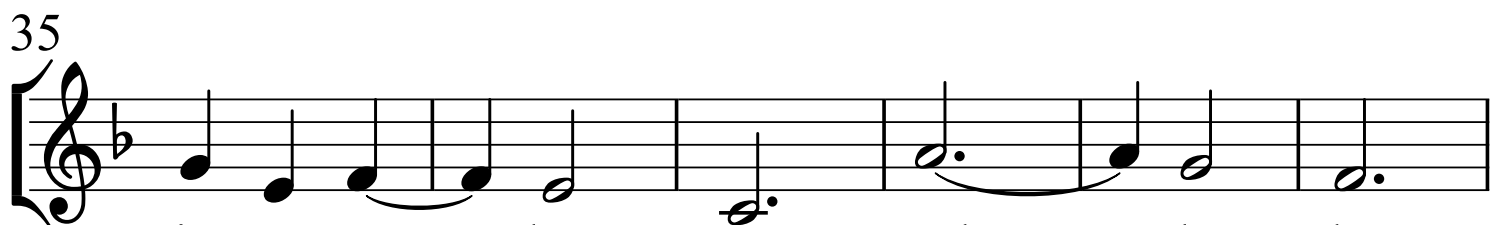
cao-miz hui - hui — jo — in an - ge los -



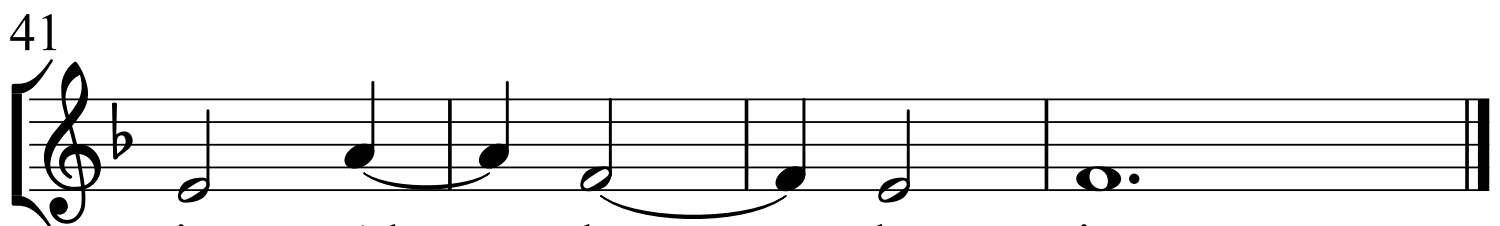
me, cao-miz hui-hui jo-co in an -



ge - los me, in an - ge-los me,



in an - ge - los me. Al - le - lu -



ia Al - le - lu - ia.

Basso

Xicochi xicochi à4

Gaspar Fernández
(~1565 - 1629)

